

Installation Guide for Inventory Scanners



Contents

About USB Communicator	3
Install USB Communicator on the PC.....	3
Licensing USB Communicator Via PC	3
Configure Settings	4
Troubleshooting	5

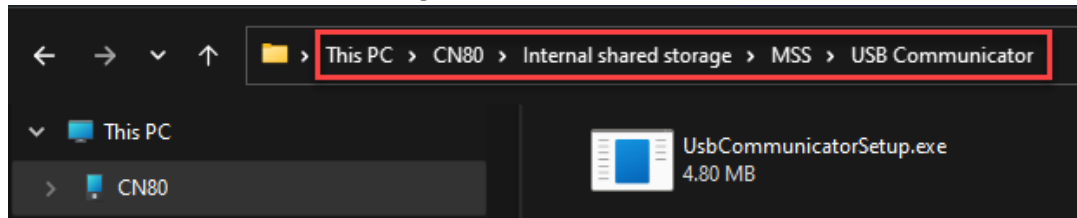
About USB Communicator

USB Communicator is a PC based software application which facilitates data transfers to and from a mobile scanner which has an app developed by MSS Software. USB Communicator is an ideal utility when Wi-Fi connectivity is not allowed or restricted because it facilitates data transfers between the scanner and PC without touching the network or Internet. It facilitates data uploads from the PC to the scanners such as a database lookup file, and downloads from the scanner to the PC such as scanned data.

Install USB Communicator on the PC.

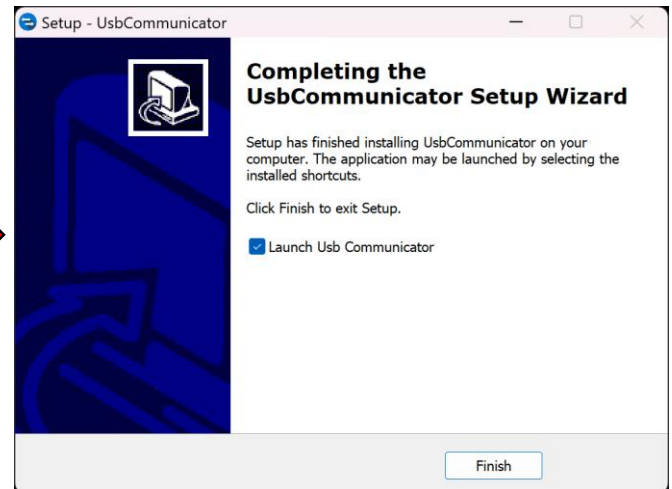
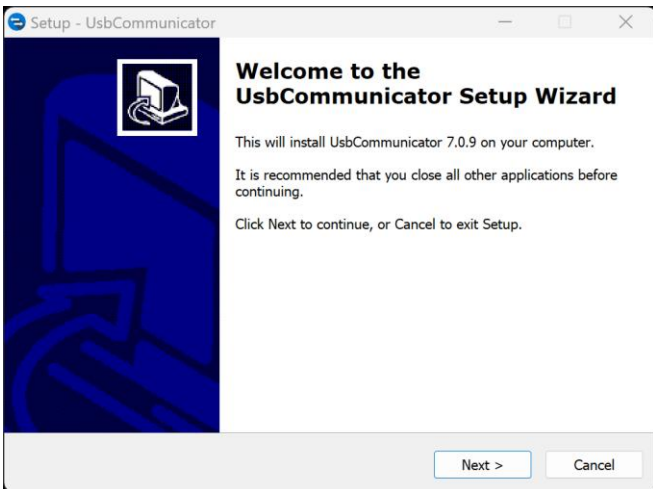
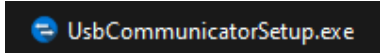
The installation file can be found in two locations:

- a. Install from the scanner’s memory. The file path is
PC > CN80 > Internal Shared Storage > MSS > USB Comms



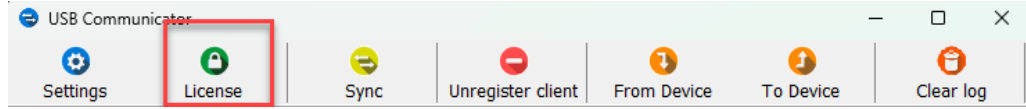
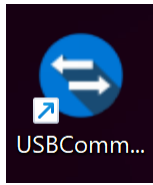
- b. Download the latest version from the MSS website under the Downloads Tab:
<https://www.mss-software.com/shop/USB-COM~Android+USB+Communicator.htm>

- i. Double click the UsbCommunicatorSetup.exe
- ii. Advance through the Installation menus until setup is complete



Licensing USB Communicator Via PC

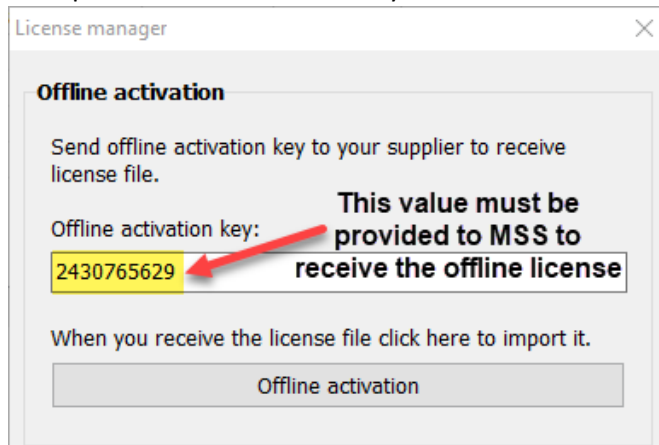
Launch USB Communicator and click on the green “License” option in the menu bar.



Licensing can be done either Offline or Online:

- a. Offline activation: Receive a license file from MSS Software (Offline activation key for each USB communicator PC must be provided to MSS to receive licensing file. Each USB communicator must have a license file that matches with its offline activation key).

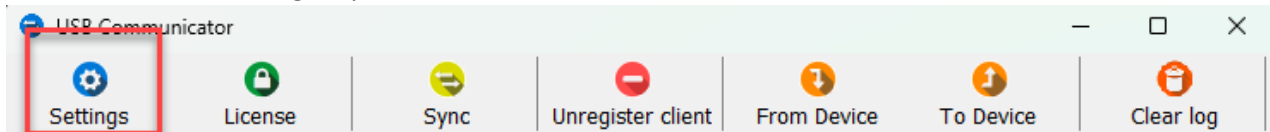
Example of Offline Activation Key



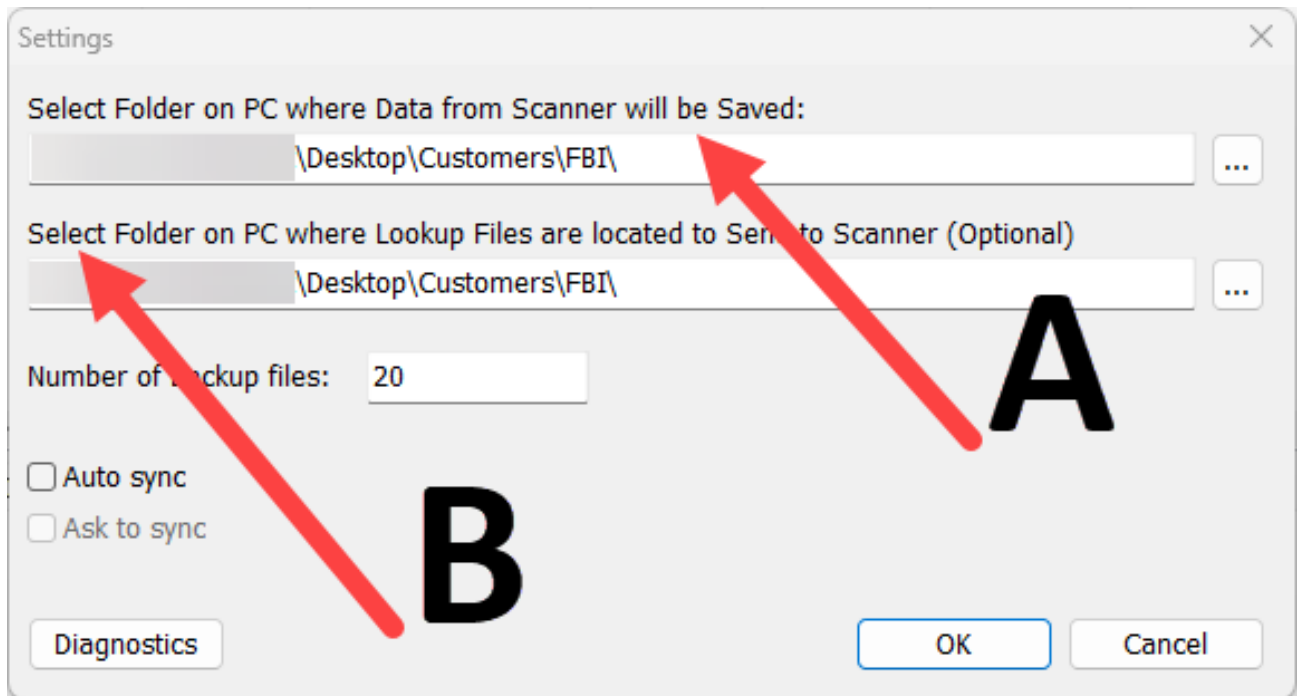
- b. Online activation: Activation code provided by MSS Software. **Internet connection is required.**

Configure Settings

Click on the blue "Settings" option in the menu bar.



- a. Select Folder on PC where Data from Scanner will be Saved: This file path points to the location data transferred from the scanner to the PC will be saved.
- b. Select Folder on PC where Lookup Files are located to send to Scanner (Optional): ****NOT REQUIRED FOR FBI APPLICATION PURPOSES**** This file path points to the location data that will be loaded onto the handheld scanner is located on the PC



2. Ensure the scanners have been whitelisted by IT on the network so that the PC workstations can communicate with them. Otherwise, all data transfer will be blocked.

Troubleshooting

Product support and FAQs may be found at the product page. Visit [FBI Evidence Scanner Kit \(mss-software.com\)](https://www.mss-software.com) for more assistance.